

## Paper Mannequin (Hand made)



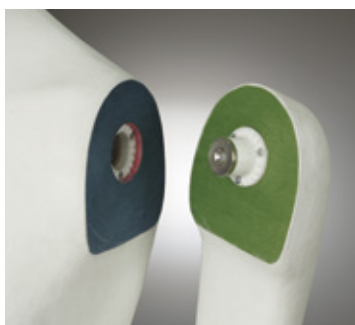
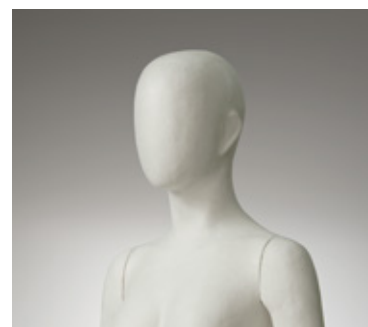
can stand by the leg shaft base



Japanese traditional paper + natural glue

### Size (asian)

|     |             |
|-----|-------------|
| 175 | Height (cm) |
| 38  | Sholders    |
| 77  | Chest       |
| 59  | Waist       |
| 86  | Hips        |
| 9   | Heel        |
| 22  | Shoes       |



attached with the magnet